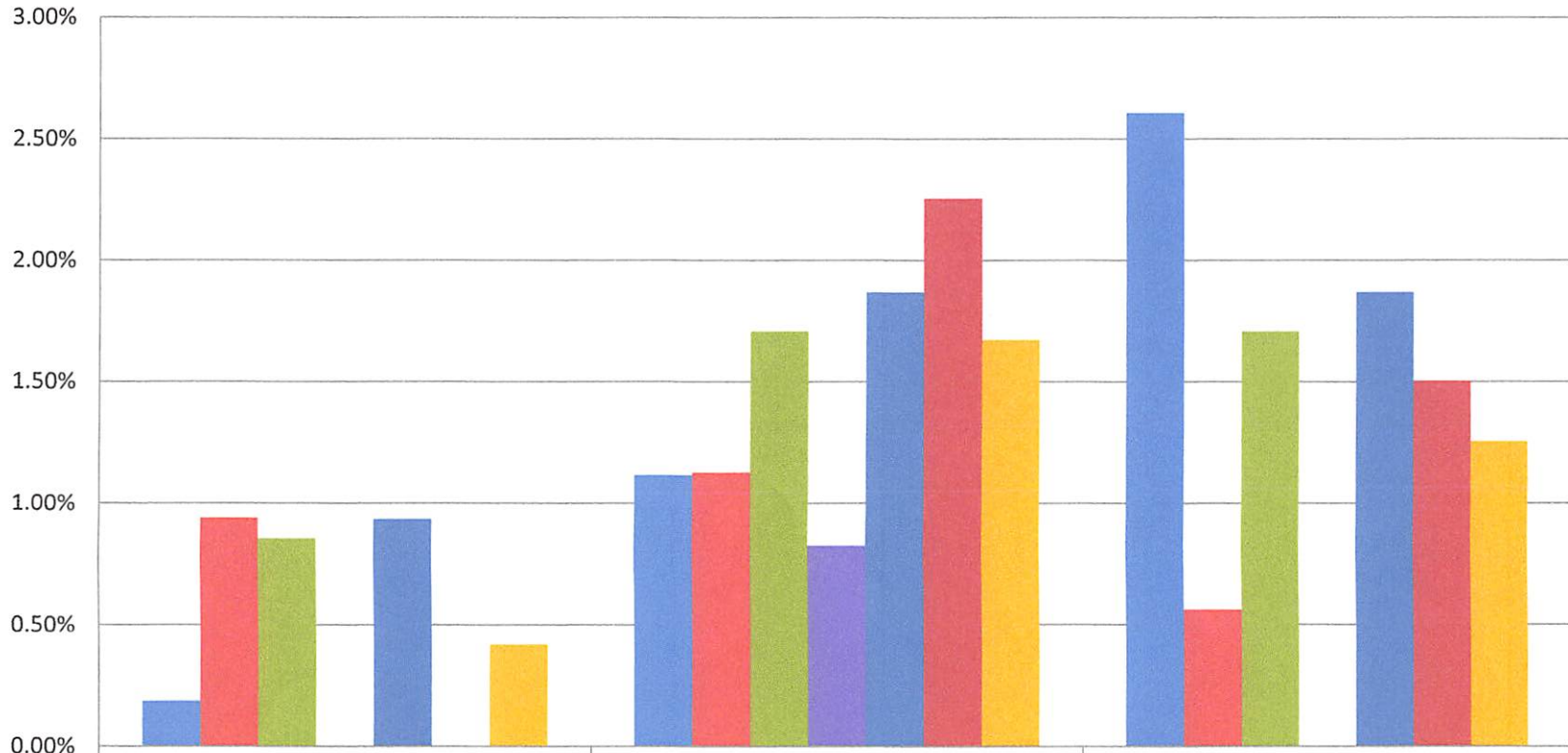


Meridian Surgery Center Yearly Outcome Rates 2015-2017



| | Infection Rate | Complication rate | Admit / Hospitalization Rate |
|----------------------|----------------|-------------------|------------------------------|
| ■ 2015 Year in Total | 0.19% | 1.12% | 2.61% |
| ■ 2016 Year in Total | 0.94% | 1.13% | 0.56% |
| ■ 2017 1st Quarter | 0.85% | 1.71% | 1.71% |
| ■ 2017 2nd Quarter | 0.00% | 0.83% | 0.00% |
| ■ 2017 3rd Quarter | 0.93% | 1.87% | 1.87% |
| ■ 2017 4th Quarter | 0.00% | 2.26% | 1.50% |
| ■ 2017 Year in Total | 0.42% | 1.67% | 1.26% |

Published Centers for Medicare and Medicaid Services (CMS) - Physician Quality Reporting Initiative, data shows that Meridian Surgery Center achieves significantly lower rates of infection than are reported by hospitals for all Washington State, including Pierce and King Counties. Meridian Surgery Center's model of care presented in these quality data reports stresses surgical care quality, service and cost savings, which is consistent with the triple aim that is the primary goal of ACOs. Compared with hospital outpatient settings in Pierce County and King Counties in Washington State, Meridian Surgery Center achieves a significant cost savings.